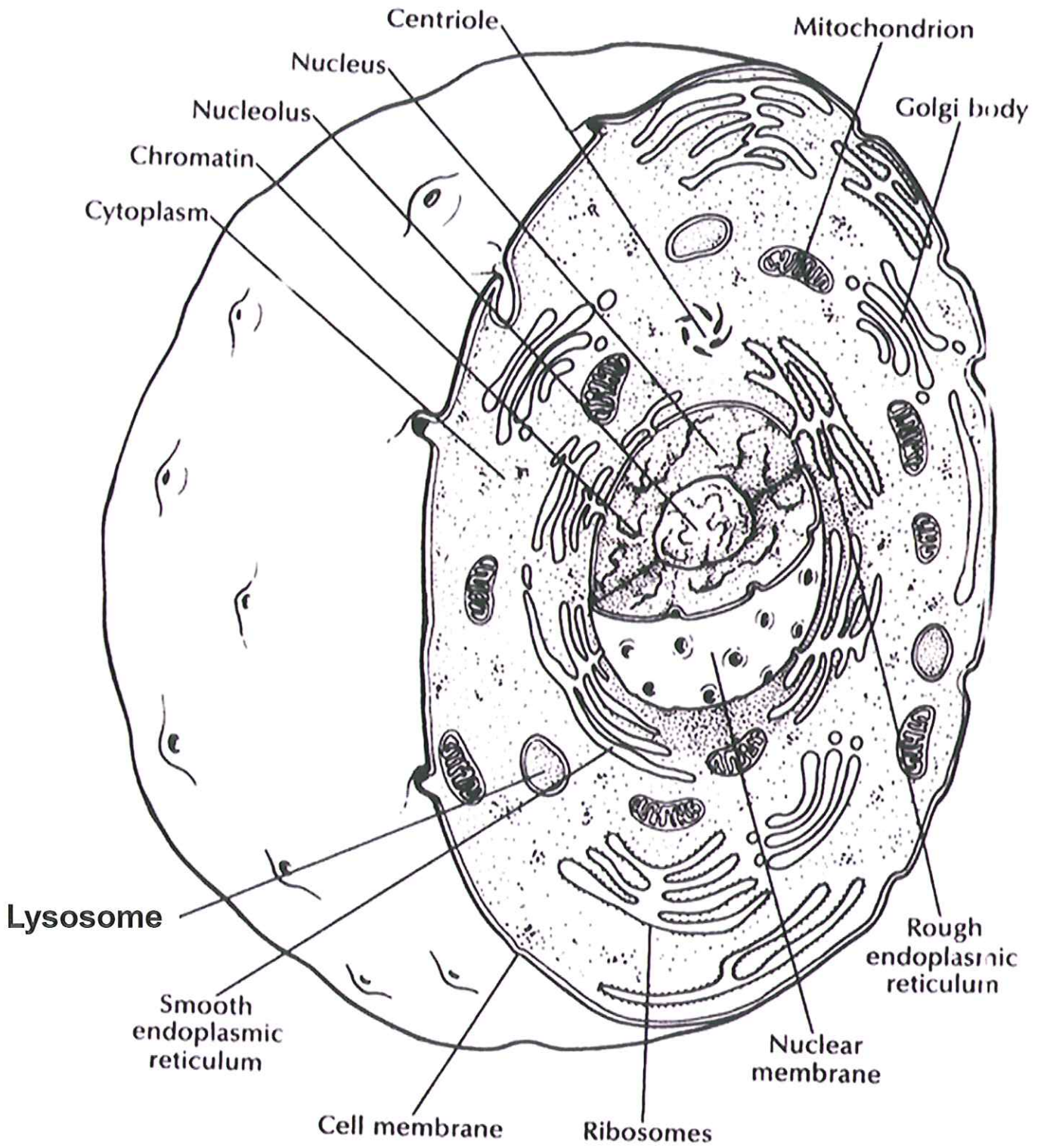
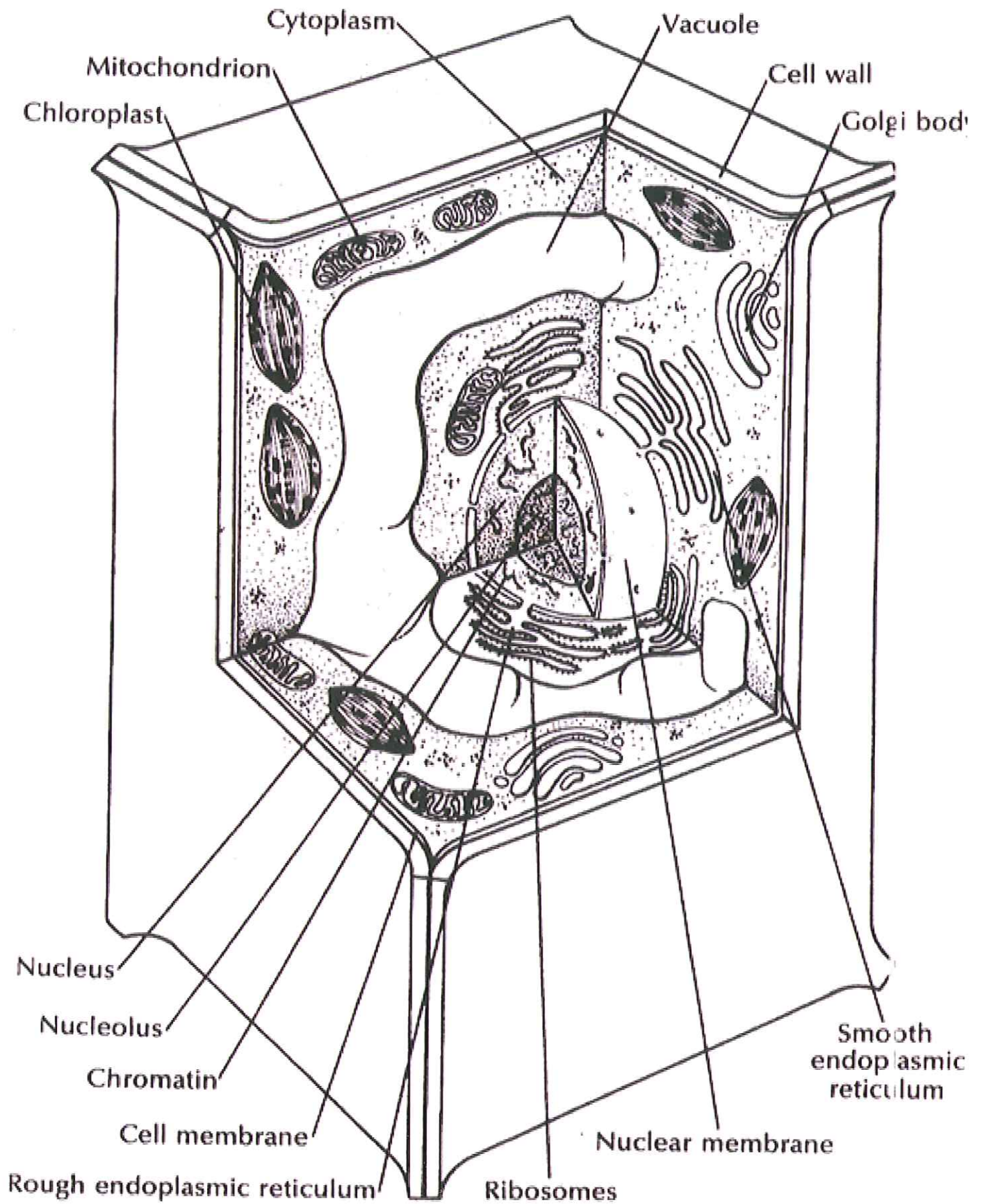


Animal Cell



Plant Cell



Cell Coloring Instructions:

Use the following color coding according to the functions of the cell organelles. Full credit (50 points!) includes:

- 1) Correct coloring,
- 2) List what each color represents,
- 3) List of the organelles and their functions.

RED - Energy (Animal: Mitochondria; Plants: Mitochondria and Chloroplasts)

YELLOW - Protein Preparation (Animal/Plant: Golgi, Rough-ER, Smooth-ER, Ribosomes, Nucleolous, Nuclear Membrane).

BLUE - Genetic Information (Animal/Plant: Nucleus, Chromatin)

GREEN - Waste (Animal: Change the Vacuole's name into Lysozome; Plant: Vacuole).

BROWN - Physical Support (Animal: Draw Cytoskeleton elements, such as rods and branches; Plants: Cell Wall).

Cytoplasm, Cell Membrane - are involved in nearly ALL of these processes. Leave uncolored (or add a very light background color).