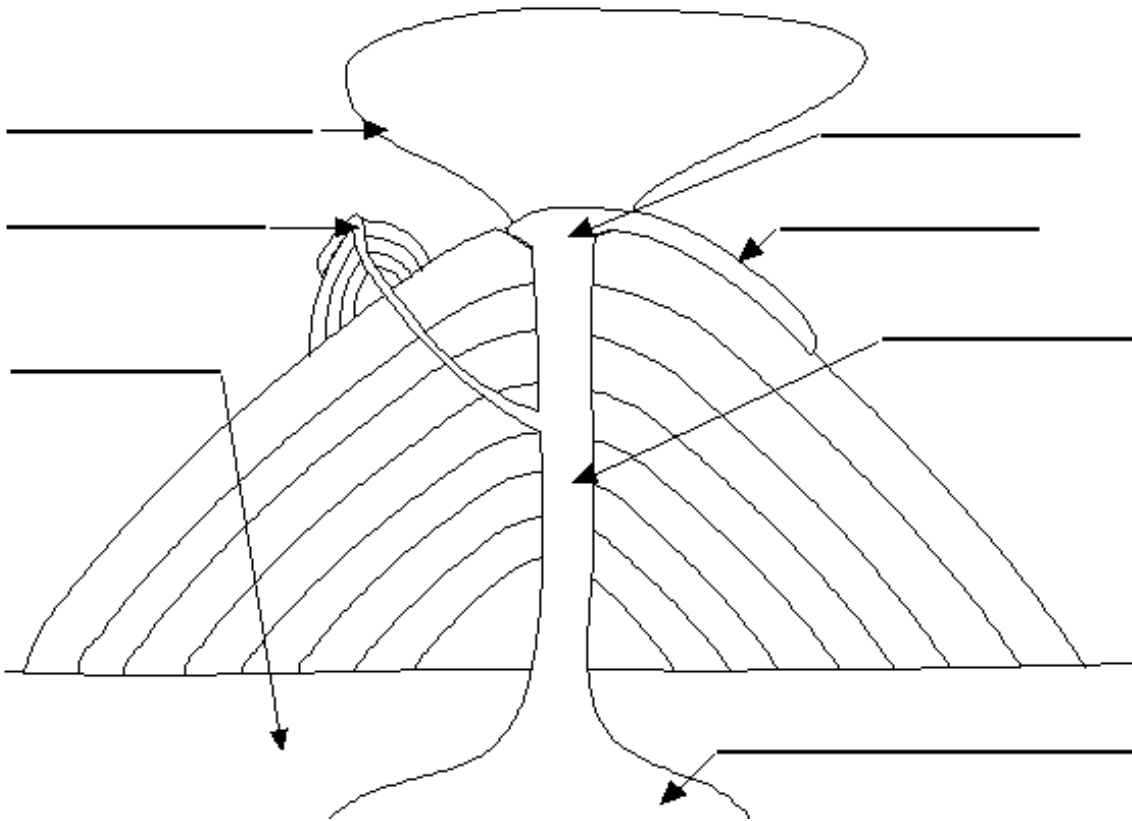


Chapter 6 Study Guide

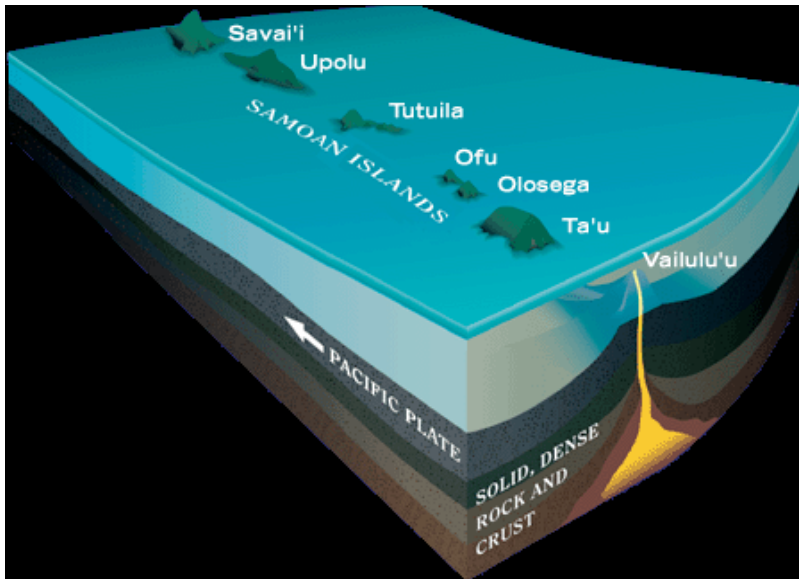
1. Be able to identify the different parts of a volcano below.



2. What is a caldera?
3. Quiet eruptions can produce two different types of lava that differs in temperature. List the two types of lava and describe them.
4. Understand and be able to describe the life cycle of a volcano and list the volcano's three stages of activity.
5. What is the name of a fountain of water and steam that erupts from the ground due to built up pressure beneath the earth? Hint: Refer back to a lab demonstration.

6. What is a basin?
7. Name the different landforms made of lava and ash that are created from volcanic eruptions.
8. What forms when magma squeezes between horizontal layers of rock?
9. What is a batholith?
10. Which plate subducted beneath the North American plate and resulted in the formation of Mount Shasta?
11. Magma that hardens in a volcano's pipe forms what?
12. The San Andreas fault in California is an example of what type of fault?
13. Refer back to your Tower Construction lab, which type of foundation is the most stable?
 - a) cut stone
 - b) reinforced concrete
 - c) rubble, fieldstone
 - d) brick
14. Give two examples of basins in California that was mentioned in your textbook or in your class notes.
15. Volcanic eruptions are classified as quiet or explosive and are determined by which two factors?
16. A measure of resistance of a fluid or its "thickness" is referred to as?
17. Lower viscosities forms crystals that cool much more quickly and will result in more grainy rocks with larger, more visible crystals. Is this statement true or false? If false, correct to make it true.
18. Describe the various sizes of pyroclastic materials.

19. What is the percentage of volcanoes (including both active and dormant volcanoes) present in the Ring of Fire?
20. A string of islands that results from volcanoes are called?
21. Refer to the image below, which of the islands is considered the oldest and why?



22. Which type of volcano forms when the volcano's lava is high in silica, and the ash, cinders, and bombs build around the vent to create a steep, cone-shaped hill or small mountain?
23. Is the soil around a volcano considered fertile or non-fertile? Explain your answer.
24. Give examples of plutons and describe each type.
25. Are igneous rocks that form in a magma chamber considered intrusive or extrusive?