

11. Homeostasis: maintain stable internal conditions ex: heart rate

9. Scientific method: Problem; observation; gather info (background); hypothesis; test hypothesis; data; conclusion

10. Theory: explanation of facts, laws, reasons, supported by many observations + multiple lines of evidence

15. Microscope:  upside-down & backwards

12. link an ediac

1. Inf. assumption based on observations

Obs: use of senses to gather info

Pre: Inference of the future

Graphing

Depend.: Y axis (responds to independ)

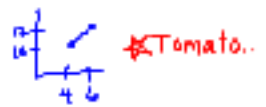
Independ.: X axis
↳ controlled/manipulated by scientist



20
10
1

4. Lacks a "control" = plant with NO aspirin! Important for comparison to plants...

5. Graph: color, different patterns (have key or legend). Line graph



Bar graph = 1600 cm for counting (like surveying kids for favorite sport)

8.2 Km = _____ mm

11. Conclusion of lab report: Whether or not your hypothesis was correct; summarize data; list improvements (for 'next time') → if wrong: explain why you were wrong!

12. ~~0.005 kg~~ ~~500 g~~ ~~5000 mg~~ = 5g = 500mg = 5000mg



20. 8 characteristics = "Life Notes" on edline

9. Background info: research (online etc) observations (using your senses)

Test Format

- ~20 m/c
- ~10 short answer/F-i-t-blanks
- possibly 1 short essay

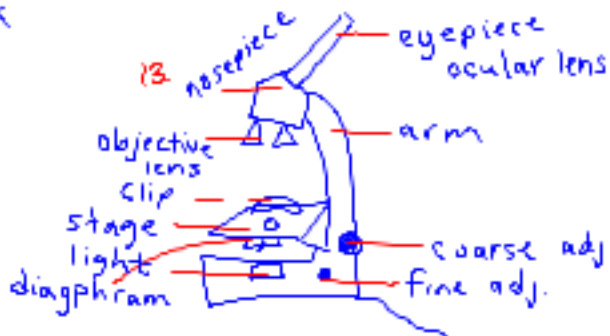
$$0.56 \text{ cm} = 0.56 \text{ m}$$

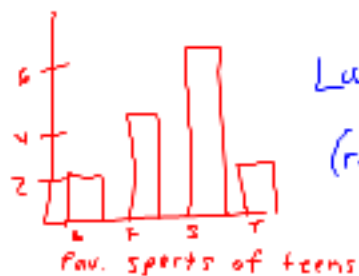
$$9.8 \text{ mm} = 1 \text{ cm}$$

(2000)

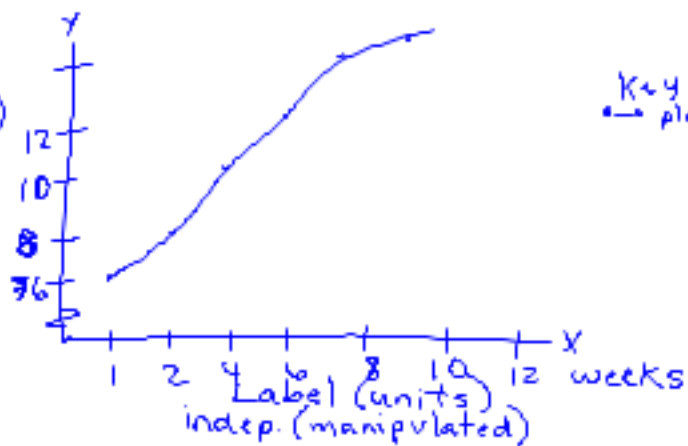
King, Henry, Died, By, Drinking, Chocolate, Milk

K
H D $\xrightarrow{0.021 \text{ m} \Rightarrow 2.1 \text{ cm} = 21 \text{ mm}}$
b D C m





5.
Label (units)
dep.
(responding)



8 Characteristics of life

must know for the test!

- living things are made up of units called cells
- living things reproduce
- living things are based on a universal genetic code.
- living things grow and develop.
 - obtain materials and energy
 - respond to their environment.
- maintain a stable environment.
- take energy as a group living things change over time.

by: Alex Pagan