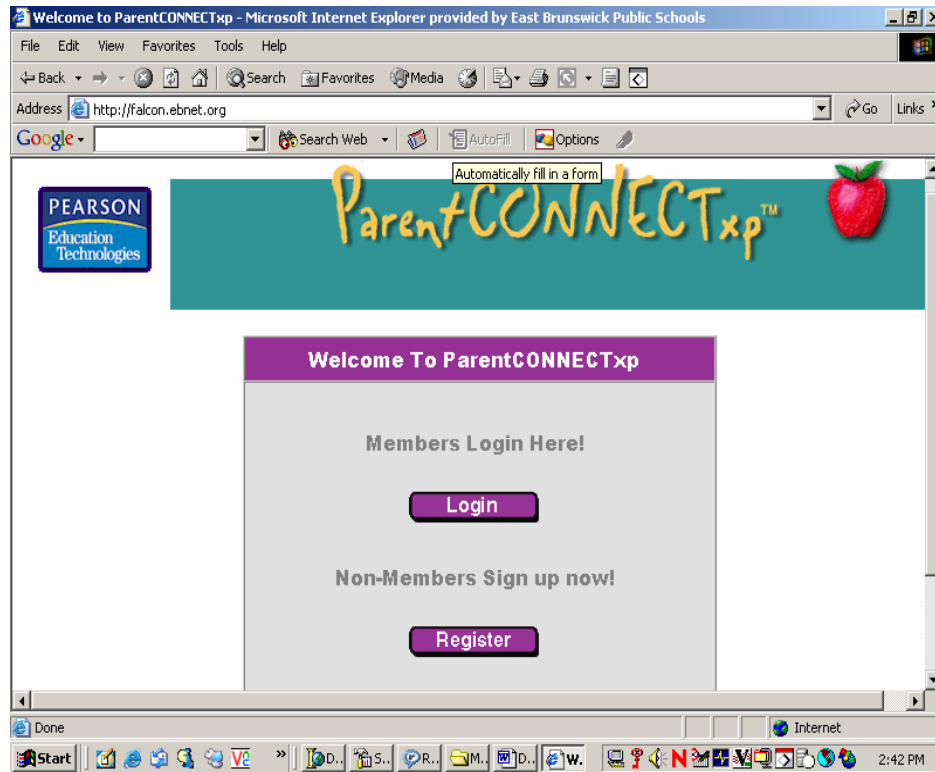


Parent Connect Access Information:

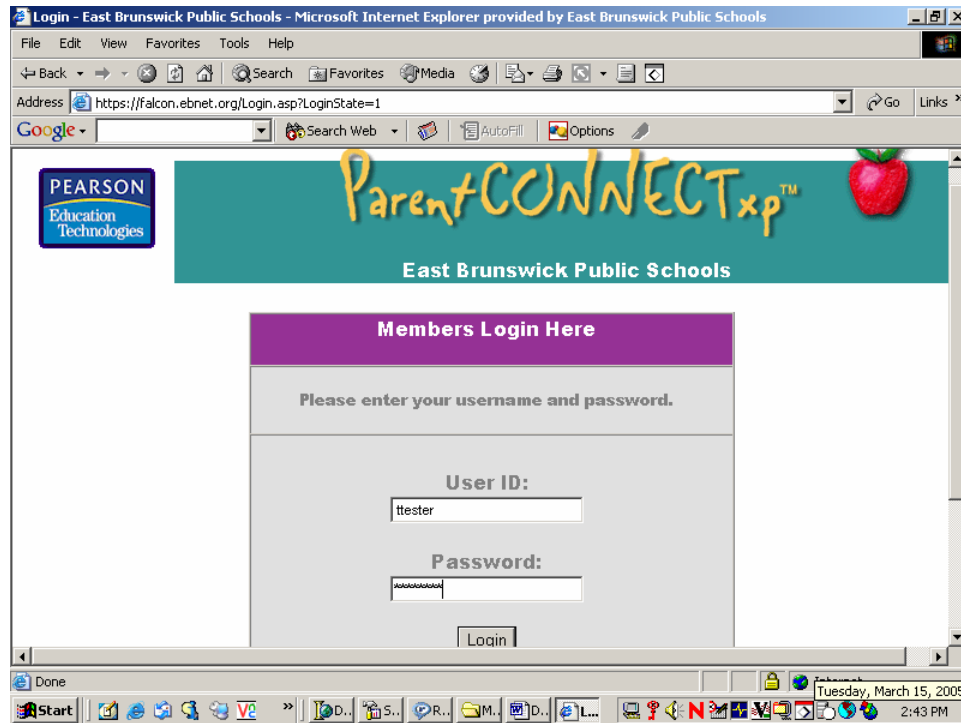
1. Open a browser with an active connection to the Internet. Type 'http://falcon.ebnet.org' in the Address field. The Parent Connectxp Welcome screen opens. Click on the Login button to log into Parent Connect.



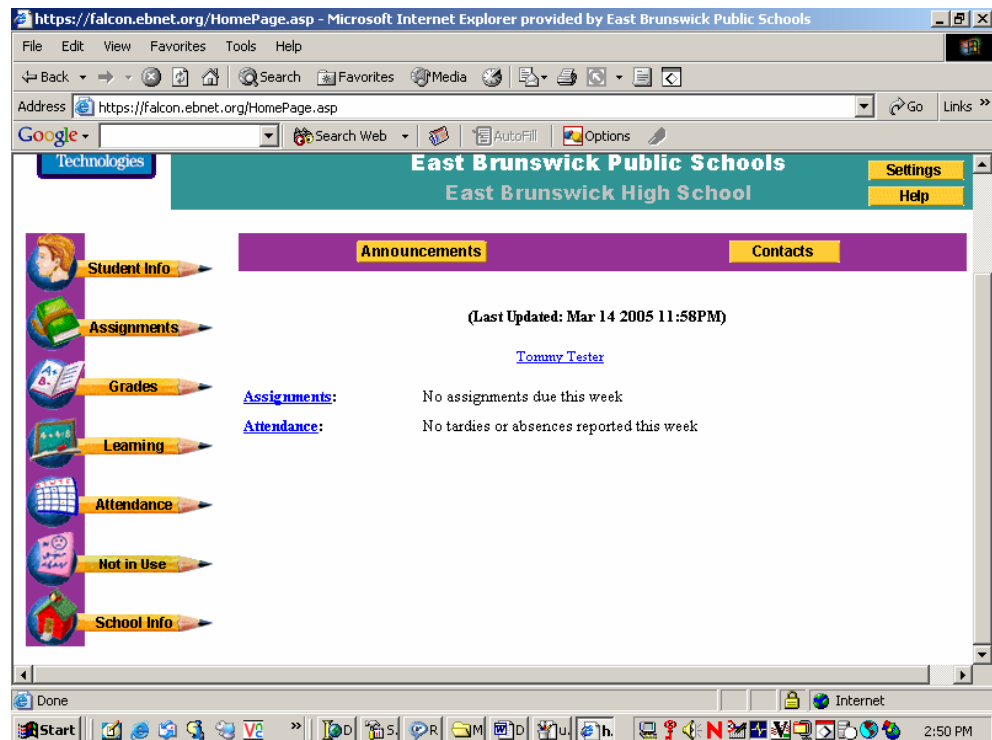
2. A Security Alert pop-up may appear. Click the Yes button to continue.



3. Enter the User ID and Password that you were provided and click the Login button.



4. Parent Connect opens as shown below.



5. Underlined items are links to other screens. Assignments will open the assignments screen. You have a choice of how to view these assignments from the center drop down menu. Buttons and Pencils link to other screens. From the Assignments pencil, you can click Schedule to view numeric grades. Click on the numeric grade to view that specific subject's assignments.

