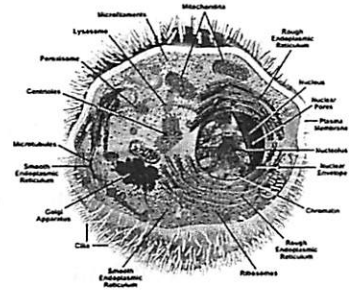


# Looking Inside the Cell



Directions. Use pages 60-67 in the textbook to answer the following questions.

## INTRODUCTION

1. What are organelles?

---

---

## CELL WALL and CELL MEMBRANE

2. The rigid layer of nonliving material that surrounds plant cells is the \_\_\_\_\_.
3. Circle the letters of each sentence that is true about the cell wall.
  - a. Cell walls are made of cellulose.
  - b. Plant cells have cell walls.
  - c. Animal cells have cell walls.
  - d. Water and oxygen cannot pass through the cell wall.
4. What is the job of the cell wall?

---

---

5. Where is the cell membrane located in cells that do have cell walls?  

---

---
6. Is this question true or false? The main function of the cell membrane is to control what comes into and out of a cell. \_\_\_\_\_

## NUCLEUS

7. What \_\_\_\_\_ is the control center of the cell and directions all of the cell's activities.
8. Circle the letter of each sentence that is true about the nucleus.
- a. Materials move into the nucleus through pores in the nuclear membrane.
  - b. Chromatin contains the instructions that direct the functions of a cell.
  - c. The nucleolus is part of the nuclear membrane.
  - d. Ribosomes are made in the nucleolus.

## CYTOPLASM

9. The region between the cell membrane and the nucleus is the \_\_\_\_\_.
10. Fill in the table below; describe the function of each organelle in the cytoplasm.

Organelles in Cytoplasm

Organelle	Function
Mitochondria	
Endoplasmic Reticulum	
Ribosomes	
Golgi bodies	
Chloroplasts	
Vacuoles	
Lysosomes	