

Week 18	Homework:	Parent Initials
	<p>Tuesday</p> <ul style="list-style-type: none"> You will take your test next week at home. The test is over Week 15, 16, 16a, 17 and 18 which equate to chapters 19 (in book B), 10,11, and 12 Read Chapter 12A – 12B (pg. 318-323) During the week create a minimum of 6 test question from any of the material that we will have on the test. Questions can be true/false, multiple choice, short answer, matching, etc. Do not turn in questions that are all the same format (so I don't want all multiple choice). Type them up and email them to me by Friday. As you read, continue to fill in the chart (located under the class notes section). The facets may provide you with some information. 	
	<p>Wednesday</p> <ul style="list-style-type: none"> Read Chapter 12C (pg. 323 – 330) Read the facet on Imperfect fungi (p. 326) As you read, fill in the chart 	
	<p>Thursday</p> <ul style="list-style-type: none"> Chapter 10, 11 and 12 Review 	
	<p>Friday</p> <ul style="list-style-type: none"> Review 	
<p>Comments:</p>		
<p>Checked Work</p>		
<p>Participation (For use by teacher)</p>		

Below are questions and there is some space for answers. If you do not have enough space you can write on the back of the sheet or on a separate piece of paper.

Tuesday – Fungi

1. What is the study of Fungi called? _____

2. Fungi has both a destructive and beneficial side. Discuss some of the destructive aspects and some of the beneficial aspects.

3. What are the 3 major features that set fungi apart from other organisms?

A. _____

B. _____

C. _____

4. Discuss the different ways that fungi obtain nutrients. _____

5. What are the slender filaments that make up fungi called? _____

6. What is the difference between cells called septate and cells called coenocytic?

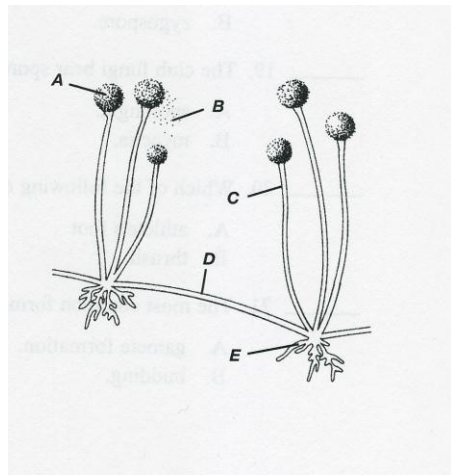
7. List and define the different specializations of hyphae?

- A. _____

- B. _____
- C. _____

- D. _____
- E. _____
- F. _____

8. Label the following diagram:



- A. _____
- B. _____
- C. _____
- D. _____
- E. _____

9. Discuss when a fungi reproduces asexually and the different ways it can be accomplished. If you do not have an understanding of the process do a little research.

10. Discuss when fungi reproduce sexually and describe the process. You might want to draw a diagram in the space below (or paste a picture)

11. What other organism that we have studied so far creates sporeangia and fruiting bodies?

12. Why do you think they are not in classified in the same kingdom?

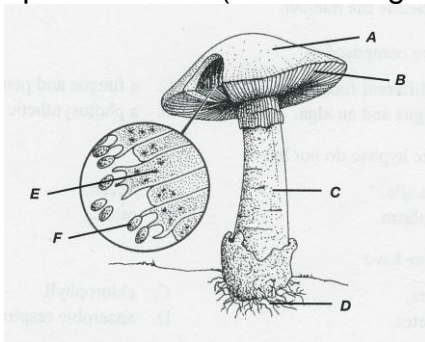
Wednesday -

1. What is(are) the general characteristic(s) that is used to divide fungi into phylums?

2. How are fungi like and unlike plants?

3. What is an imperfect fungus, and why is the list of imperfect fungi growing shorter?

4. Label the picture below (use the diagram on page 327 for help)



A. _____

B. _____

C. _____

D. _____

E. _____

F. _____

5. Describe the life cycle of a mushroom

6. Describe the components and structure of lichen.

7. List the 3 basic forms of lichens and describe each.

A. _____

B. _____

C. _____

Thursday -

1. The clear, water cytoplasm that is found just inside the plasma membrane of an amoeba is called the

- | | |
|----------------|---------------|
| A. Endoplasm | C. Microplasm |
| B. Pseudoplasm | D. Ectoplasm |

2. Single-celled algae that have walls of silica are the

- | | |
|--------------------|-------------|
| A. Diatoms | C. Desmids |
| B. Dinoflagellates | D. Euglenas |

3. Algae that reproduce by heterogametes produce

- | | |
|-------------------|-----------------------|
| A. Buds | C. Ova and sperm |
| B. Asexual spores | D. One type of gamete |

4. The blue-green algae are not included in the kingdom Protista because they all

- | | |
|---------------------|--------------------|
| A. Have chlorophyll | C. Are prokaryotic |
| B. Lack tissues | D. Have tissues |

5. Sarcodines move by

- | | |
|---------------|------------------------|
| A. Cilia | C. Flagella |
| B. Pseudopods | D. Euglenoids movement |

6. The cellular organelle used for expelling excess water from protozoan cells is the

- | | |
|------------------------|-------------|
| A. Contractile vacuole | C. Gullet |
| B. Anal pore | D. Pellicle |

7. Which method of reproduction do multicellular algal colonies use?

- | | |
|----------------------------|------------------|
| A. Conjugation | C. Fragmentation |
| B. Formation of isogametes | D. All of these |

8. In the paramecium the oral groove is
- A. The means by which wastes are expelled
 - B. A method of maintain water balance
 - C. An entryway for food particles
 - D. An area where cilia are controlled
9. The vector that transmits the malarial protozoan is the
- A. Cattle tick
 - B. *Anopheles* mosquito
 - C. Tsets fly
 - D. Housefly
10. Conjugation is a method of sexual reproduction best represented by
- A. Euglena
 - B. Paramecia
 - C. Amoebas
 - D. *Plasmodia*
11. Although some of the larger algae have structures that resemble true roots, stems, and leave, algae are not considered members of the plant kingdom because they
- A. Are photosynthetic
 - B. Lack specialized tissues
 - C. Reproduce sexually
 - D. Are autotrophic
12. The fungus like protists are no longer considered members of the kingdom Fungi because
- A. Their cell walls contain cellulose
 - B. They are motile
 - C. Their cell walls contain chitin
 - D. Both A and B
13. The spore that has flagella and is involved in asexual reproduction is a
- A. Zygospor
 - B. Zygote
 - C. Zoospore
 - D. Gamete
14. Most protozoans are classified into phyla based on their
- A. Size
 - B. Method of nutrition
 - C. Means of locomotion
 - D. Type of environment
15. A substance produced by brown algae that is used as a thickener in some foods (such as ice cream) is
- A. Cellulose
 - B. Silica
 - C. Algin
 - D. Fucoxanthin
16. The dinoflagellates are responsible for
- A. “black tide”
 - B. Excess plant growth
 - C. “red tide”
 - D. Excess algal growth
17. The algae that produce sperm manufacture them in structures called
- A. Sporedia
 - B. Mycelia
 - C. Oogonia
 - D. Antheridia
18. A paramecium moves by means of
- A. Flagella
 - B. Contractile vacuoles
 - C. Cilia
 - D. Pseudopods

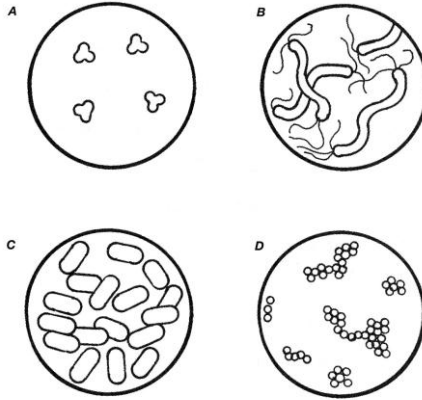
19. Which of the following is not used to classify the alga phyla?
A. Number of flagella
B. Type of chlorophyll
C. Cell wall composition
D. Method of food storage
20. Certain species of amoebas respond to life-threatening conditions, such as dryness or cold, by becoming a
A. Spore
B. Pellicle
C. Cyst
D. Protection vacuole
21. The phylum of protozoans that consists entirely of parasitic forms is
A. Sporozoa
B. Sarcodina
C. Zoomastigina
D. Ciliophora
22. The most useful characteristic for distinguishing between the two slime mold phyla, Acrasiomycota and Myxomycota, is their
A. Reproductive phase
B. Feeding phase
C. Environment
D. Color
23. An algal bloom
A. Is an overgrowth of algae
B. In a growth of a new alga
C. Is the type of flowering alga
D. Turned the water into blood in Exodus.
24. Spirogyra gets its name from its spiral
A. Chloroplast
B. Holdfast
C. Nucleus
D. motion
25. The most important function of fungi is their role
A. In food production
B. As human disease pathogens
C. As plant disease pathogens
D. As decomposer organisms
26. All of the following are characteristics of the kingdom Fungi except
A. The cell walls contain chitin
B. All are eukaryotic
C. All contain chlorophyll
D. All are heterotrophic
27. The bodies of most true fungi are composed of slender filaments called
A. Hyphae
B. Rhizoids
C. Stolons
D. Haustoria
28. The imperfect fungi are unique because they
A. Are never parasitic
B. Have no known sexual phase
C. Always live in water
D. Are autotrophic
29. The walls that separate cells in fungal hyphae are called
A. Stolons
B. Septa
C. Asci
D. Cell plates
30. The entire mass of intertwined hyphae formed by a fungus is known as the
A. Mycelium
C. Zygosporangium

- B. Ascospore
D. Sporangiphore
31. Ascomycetes produce ascospores inside a sac called a/an
A. Ascot
B. Haustoria
C. Sporangium
D. Ascus
32. The club fungi represents a symbiotic relationship between fungi and
A. Molds
B. Algae
C. Plant roots
D. Protozoans
33. Lichens represent a symbiotic relationship between fungi and
A. Molds
B. Plant roots
C. Algae
D. Protozoans
34. Coenocytic hyphae
A. Contain septa
B. Are characteristic of the phylum
C. Lack septa
D. Produce conidia

Chapter 10 review

1. The main form of reproduction for most bacteria is
A. Cell division
B. Meiosis
C. Binary Fission
D. Spores
2. A natural method of genetic transfer in bacteria is called
A. Replication
B. Conjugation
C. Transformation
D. pasturization
3. Bacteria that use non-living organic matter for food are
A. Parasites
B. Saprophytes
C. Autotrophs
D. heterotrophs
4. Some bacteria have thickened slime layer called
A. A membrane
B. An endospore
C. A capsule
D. A spore
5. Viruses which do not immediately kill a cell but do change both the cell's genetic makeup and its characteristics are called
A. Transforming viruses
B. Latent viruses
C. Persistent infection viruses
D. Virulent viruses
6. Chemicals produced by living organisms and used in the treatment of some infectious diseases are called
A. Antibodies
B. Antibiotics
C. Antigens
D. Antitoxins
7. Viruses destroy the cells they invade in a cycle known as the
A. Lactic cycle
B. Lytic cycle
C. Lactic acid cycle
D. Phagic cycle

8. In order for a bacterium to grow, which of the following factors must be within the proper ranges for that bacterium?
- A. Moisture
 - B. Temperature
 - C. pH
 - D. All of these
9. Simple viruses contain a core of
- A. Protein
 - B. Nucleic acids
 - C. Carbohydrates
 - D. Enzymes
10. Viruses reproduce by
- A. Undergoing mitosis and then cytoplasmic division
 - B. Undergoing cytoplasmic division without undergoing mitosis
 - C. Organizing their own materials from byproducts of a host cell
 - D. Causing the host cell to form virus particles.
11. What is a virus
- A. An obligate intracellular parasite
 - B. An obligate extracellular parasite
 - C. A dependent extracellular parasite
 - D. A dependent intracellular parasite
12. What test would you use to determine if there are peptidoglycans in the bacterium cell wall
- A. Garner Stain Test
 - B. Iodine Stain Test
 - C. Gram Stain Test
 - D. Hook Stain Test
13. The following questions refer to the diagram below. Read each question entirely. Write the letter you choose in the blank beside each number. Remember to look for clues in the name.
1. A doctor treated several patients who got sick from food poisoning. They had all eaten lunch at The Greasy Spoon restaurant. A state health inspector was immediately sent to inspect the restaurant and found *Staphylococcus aureus*, a species of bacteria known to cause food poisoning, in a sample of chicken salad. Which of the diagrams illustrates these bacteria?
 2. (continuing from previous question) However, none of the patients had ordered the chicken salad. The inspector also found *Bacillus cereus*, another bacterial species known to cause food poisoning, in the potato salad. All the patients had eaten potato salad. Which of the diagrams illustrates these bacteria responsible for the poisoning of the patients?
 3. *Rhodospirillum rubrum* was one of the three bacterial species which were prepared for microscopic viewing. A student mislabeled the slide by mistake. By looking at all the slides, the student was able to identify the one of *R. rubrum*. Which one did he choose?



14. Describe the structure of a prokaryotic organism.

15. Which type of bacteria require oxygen to live?

- A. Obligate anaerobes
- B. Facultative anaerobes
- C. Obligate aerobes
- D. Mandatory aerobes

16. Describe the process of conjugation.
